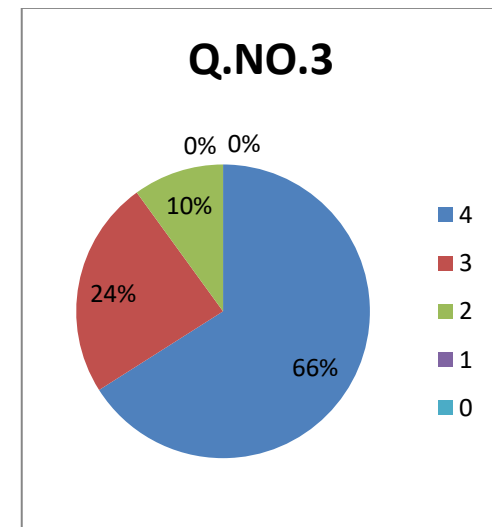
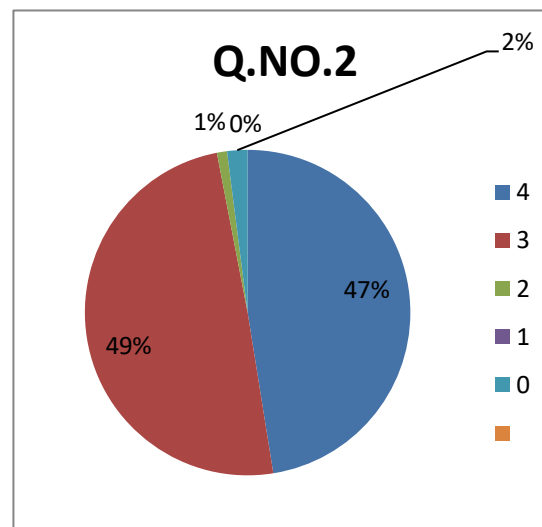
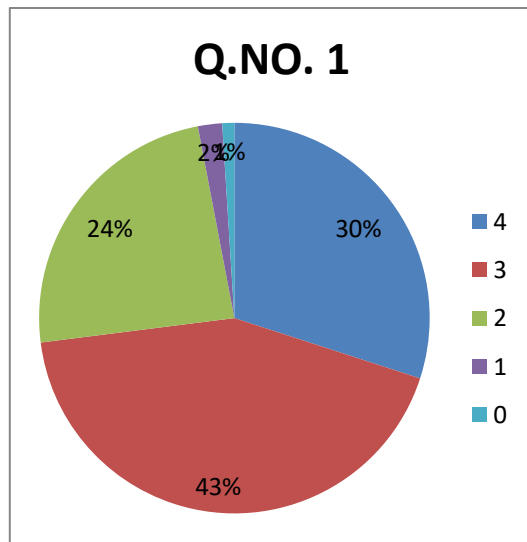


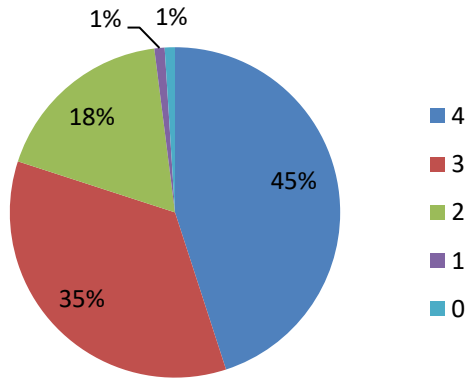
GOVERNMENT DEGREE COLLEGE, RAZOLE, EAST GODAVARI DISTRICT

OVERALL TEACHING LEARNING PROCESS ANALYSIS FOR THE YEAR 2018-19

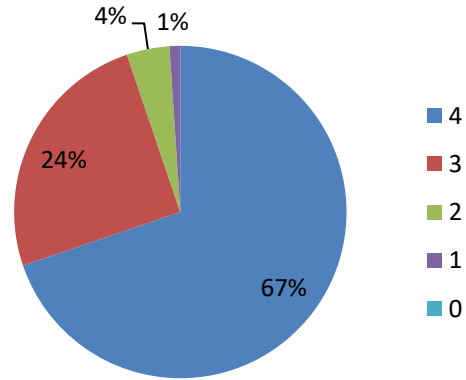
TOTAL NUMBER OF STUDENTS : 300



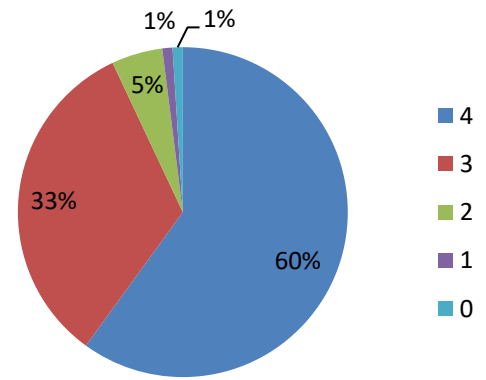
Q.NO.4



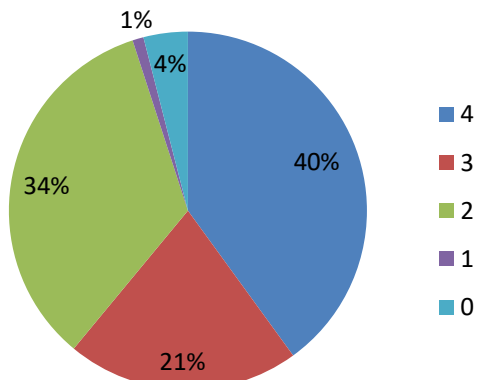
Q.NO.5



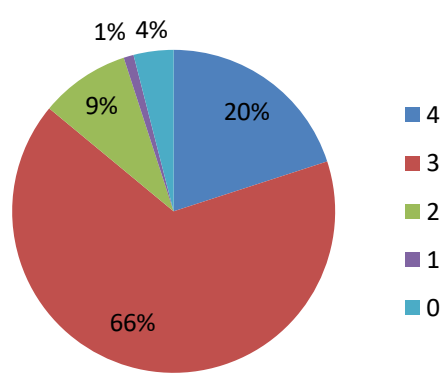
Q.NO.6



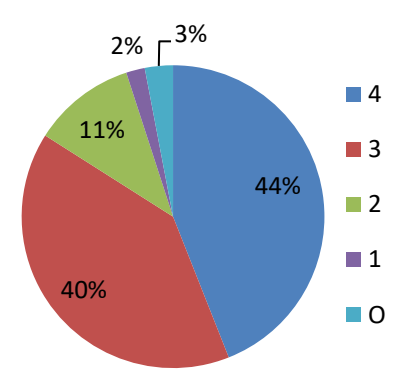
Q.NO.7



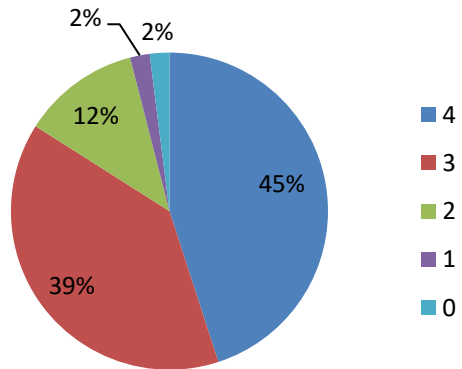
Q.NO.8



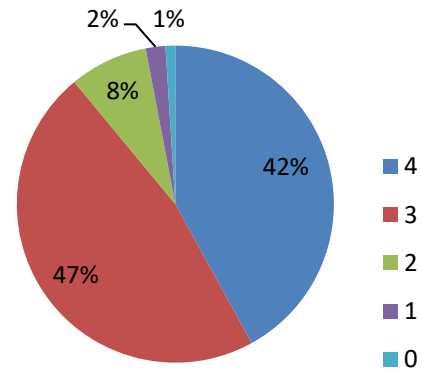
Q.NO.9



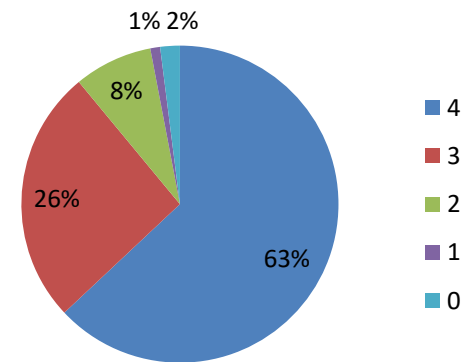
Q.NO.10



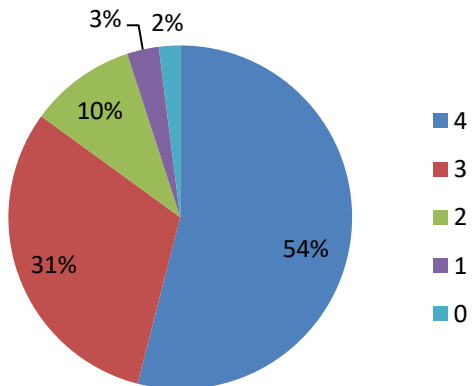
Q.NO.11



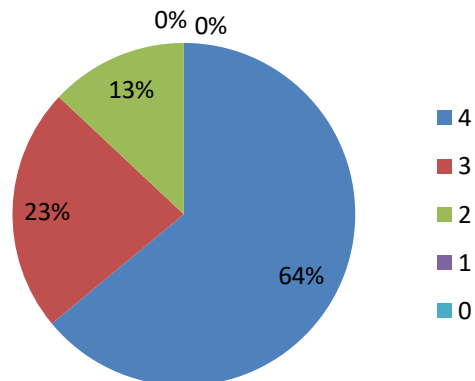
Q.NO.12



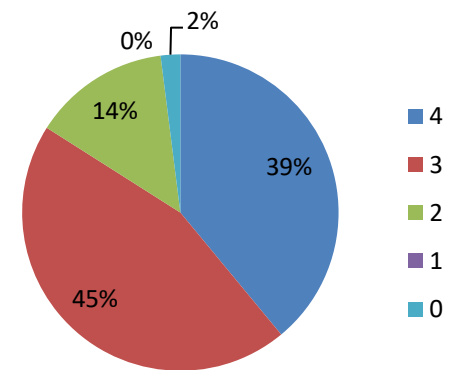
Q.NO.13



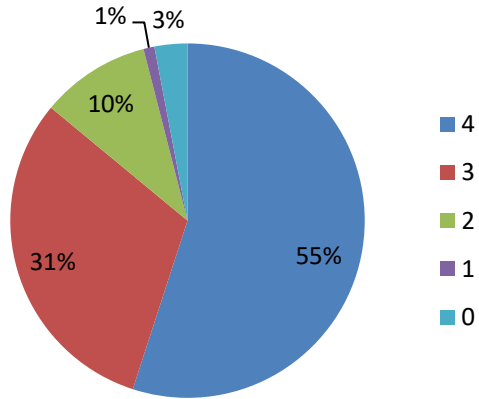
Q.NO.14



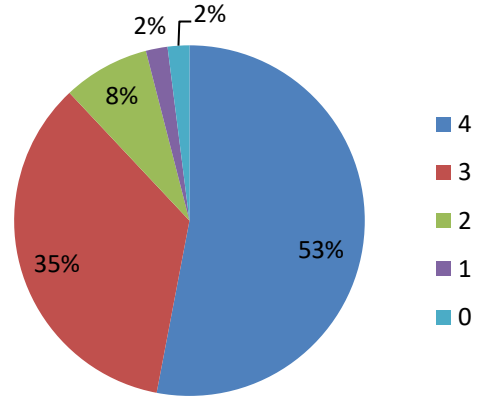
Q.NO.15



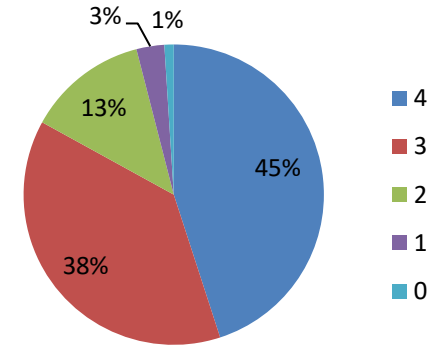
Q.NO.16



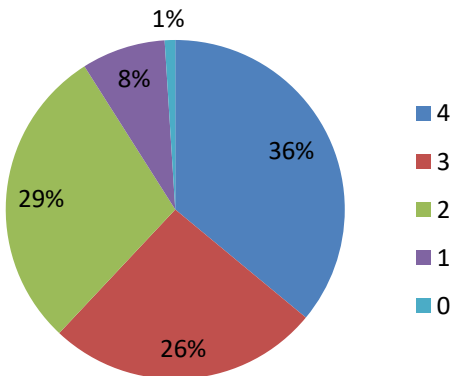
Q.NO.17



Q.NO.18



Q.NO.19



Q.NO.20

